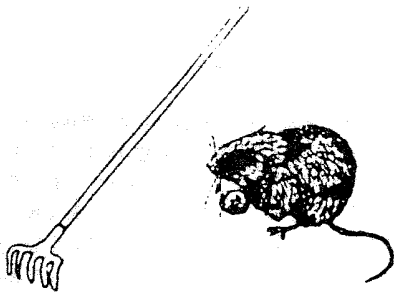


NORTH AMERICAN TRUFFLING SOCIETY  
LIBRARY 87-71



NATS CURRENT NEWS

Monthly publication for  
THE NORTH AMERICAN TRUFFLING SOCIETY, INC.  
P. O. Box 296  
Corvallis, OR. 97339

June-July 1987

Editor: Pat Rawlinson

Vol. 5 No. 6

President: Henry Pavelek, 32566 Peoria Rd., Albany, OR. 97321, 753-6384.  
Vice President: Dr. Steven Miller, P. O. Box 3004-203, Corvallis, OR.  
97339, 757-4408.  
Secretary: Norene Wedam, 423 Dover Ct., Jefferson, OR. 97352, 327-3661.  
Treasurer: Welles Bushnell, 481 Lancaster Dr. NE, Salem, OR. 97301,  
585-4215.  
Immediate Past President: Frank Morris, 2915 NW Garfield, Corvallis, OR.  
97330, 754-9362.  
Board Member-at-Large: Frank Evans, 808 NW Merrie Drive, Corvallis, OR.  
97330, 752-5480.  
Membership: Vernon Moore, 31831 Berlin Rd., Lebanon, OR. 97355, 451-4242.  
Trufflemaster: Steve Morgan, PO Box 157, Corvallis, OR. 97339, 466-5206.  
Librarian: Don Johnson, 38644 Green Drive, Lebanon, OR. 97355, 542-8394.  
Newsletter Editor: Pat Rawlinson 34197 NE Colorado Lake Drive, Corvallis,  
OR. 97333, 752-2243.

PLEASE NOTE: This newsletter is for the months of June-July 1987. Your next newsletter will be for August-September 1987, then it will be back to once a month.

FORAY, Saturday, June 6, 1987, to Klamath Falls, OR. All members who are staying at the Maverick Motel in Klamath Falls, meet at 8:00 A. M. at the motel. We will drive SW down Main St. and follow the signs to Moore Park.

All other members and guests who will join the foray, meet at 8:30 A. M. at the north end of Link River Trail Head, in the parking lot on the left after crossing the bridge that is under construction, and just before coming to Moore Park.

From Link River Trail Head we will depart along Lakeshore Drive to Hwy 140, traveling on Hwy 140 to Rocky Point resort at the NW end of Upper Klamath Lake. We will meet the Mt. Mazama Mycological Club here at 9:00 A. M.

Dress for the weather, bring a lunch and beverage, and of course your truffling equipment.

For further information, call Steve Morgan at 466-5206 (Brownsville) or Henry Pavelek at 753-6384.

Steve Morgan  
Trufflemaster

FORAY, Saturday, July 11, 1987, to Century Drive, Bend, OR. Meet at 7:00 A. M. at Benton Center, 630 NW 7th, Corvallis, OR. We will meet at VIPS, Hwy 34 and I-5, at 7:30 A. M.

In Bend, meet at the park near Mirror Pond, in downtown Bend. We will leave from here for Century Dr.

Dress for the weather, bring a lunch and beverage, and plenty of sunscreen and insect repellent.

If you plan to attend this foray, please call Steve Morgan, 466-5206; Henry Pavelek, 753-6384; Pat Rawlinson, 752-2243; or Welles Bushnell, 585-4215. If fire danger is high the forests could be closed and there will be an alternate foray planned. The above mentioned people will know of the plans and be able to tell you of any change.

Steve Morgan  
Trufflemaster

MEETING, Monday, June 8, 1987, 7:30 P. M., Large Conference Room, Forest Sciences Lab, 3200 Jefferson Way, Corvallis, OR.

Steve Carpenter will be the guest speaker. His topic will be "General Mycology: A Comparison of Ascomycetes and Basidiomycetes."

This will be a useful aid to NATS members in identifying truffles, both in the field and at home.

For further information, contact Steve Miller, 757-4408.

Steve Miller

PORTLAND CHAPTER OF NATS MEETING AND FORAY. Please contact Dan Wheeler, 774-0223, for details of the June and July foray and meeting.

#### PRESIDENT'S COMMENTS

Our May foray to the Metolius area should be classified as a very successful one. We had a surprisingly large turnout. We found a good assortment of truffles. In addition, to the best of my knowledge, everyone found a fair amount of morels. However, what I enjoy the most is the excellent fellowship we find on our forays.

We hope that our June foray to the Klamath Falls area will be equally successful. Very little truffling has been done in that area. The potential exists for finding rare and new species. Our current hot, dry spell has had an adverse impact upon many of our common mushrooms. This could change drastically with the predicted rains, should they actually materialize.

With the low snowpack in the mountains, we can expect drier conditions even at the higher elevations this summer. On occasions, some of the more unusual mushrooms and truffles will fruit when the common ones are hard to find.

If we continue to have a hot, dry spell throughout June, July and August, we may find many of our forests closed to entry. If such is

the case, those planning to make the scheduled July and August forays should make contact with our Truffle-master, Steve Morgan, to let him know you will be participating. This is particularly important if a change in foray location is made due to a forest closure.

If you cannot reach Steve at 466-5206, try one of the other numbers listed for information on the July and August forays.

Henry Pavelek - 753-6384  
Welles Bushnell - 585-4215  
Pat Rawlinson - 752-2243

Henry Pavelek  
NATS President

#### FROM VERN MOORE

I attended a telethon several years ago, in which Chill Wills was Master of Ceremonies. He gave me a signed picture, on which he wrote: "I've been ruminating about you." The dictionary indicates that ruminating means 'chewing the cud.' It may best express a point.

I have been ruminating about all the swell forays we've had lately and the fun had by all in attendance at the last two forays. The Peterson's Butte and Metolius trips were fabulous, with lots of finds and enjoyment, and beautiful weather to boot.

I think everyone found truffles, many being Tubers, on Peterson's Butte. The Wheelers were once again our gracious hosts, with Dan leading groups to hunting areas. After the digging, everyone gathered on the hill overlooking our great valley and visited while eating lunch. A farmer, plowing a field, saw all of us up there, and plowed out a large "HI." That was a nice touch to a perfect day.

As to the Metolius foray--Ah, MORELS.! Welles and Mayetta Bushnell found a patch right away. Shawn and Alisa Anderson, and dog, Tcherro, did real good, especially Tcherro. Steve Morgan and his friend, Charles

Mercier, found truffles at the beginning of the hunt. Junpei Sekine and Nobie Tateishi found morels and truffles, and half the caravan that took the wrong road. It was good to see Marvin and Ardy Daniels out on a foray.

Ah, Dan Wheeler! He never fails to come up with the unusual, which was an over-ripe King Bolete, besides many morels and a fungus that grows on a tree that has many knobs??? Don't ask me!

I saw Karan, Gabe and Frank Evans roadhunting morels in their car--(I thought we were the only ones who do that.)

Norene and Dennis Wedam were busy finding a variety of fungi, and they enjoy many kinds as well. I saw Nels and Kristi Larsen almost everywhere. They were really tramping the woods, as was Frank Morris.

Pat and John Rawlinson didn't find too many truffles or morels on Saturday, and thought they had lost their touch. They stayed over until Sunday, and the finds were excellent.

And of course, Henry and Wanda Pavelek. You know who finds the first truffles, or whatever. Henry's got the touch. And bless Wanda for showing me the biggest patch of Yellow Ramaria(Coral) I have ever seen, and enjoyed digging up, of course!

Vern Moore  
Membership

#### FUNGUS EATS METAL-Discovery in a Forgotten Coffee Mug

A metal eating fungus discovered by an Israeli botanist may be the basis of a new industry in the future. Margalith Galun, a botanist at the University of Tal Aviv, refuses to name the fungus until she receives a patent. She stumbled on the "related mold growing in an unwashed coffee mug in her lab."

The microscopic fungus acts as a super-absorbent sponge, to capture large amounts of contaminating metals in waste water, with only a "brief contact." Galun has developed a

laboratory version of a filter filled with the fungus. "After the fungus is sated with the metals, it can be easily removed from the filter, the metals extracted and the fungus reused--a recycling that helps reduce the system's cost."

This system seems to hold promise for cleaning up polluted waterways, and for large-scale industrial use. "Other microbes" can do the same thing, but are not economical on a large scale. At present, mines and factories have to store their tainted waste water in drums at toxic waste sites. Galun's fungus can extract heavy metals such as mercury, lead, uranium, nickel, silver and zinc; these are common byproducts in manufacturing.

She says her fungus works quicker, "can be grown more cheaply and reused more often than other microorganisms under study...and thrives inexpensively on waste products from the manufacture of food and beverages." Ramat, the University's licensing company, is negotiating with several other companies to set up large-scale experiments with the filter.

(From The WALL STREET JOURNAL, 4-9-87, and reprinted here from ARKANSAS FUNGI, Newsletter for the Arkansas Mycological Society, Mar-Apr., 1987)

#### LIMERICK

There once was a truffler with rake  
Who truffled for exercise sake.  
But the results of his labor  
Produced such a savor  
His efforts were no longer quite  
so opaque.

Evedene Bennett

Photo Packets are available for \$15.00 ppd. to members. There are 35 color photographs of hypogeous fungi. Slide Packs, containing 40 slides of hypogeous fungi, are available for \$30.00, ppd. Write to NATS, PO Box 296, Corvallis, OR. 97339.

TRUFFLE OF THE MONTH

Martellia gilkeyae(Zeller and Dodge)Singer and Smith

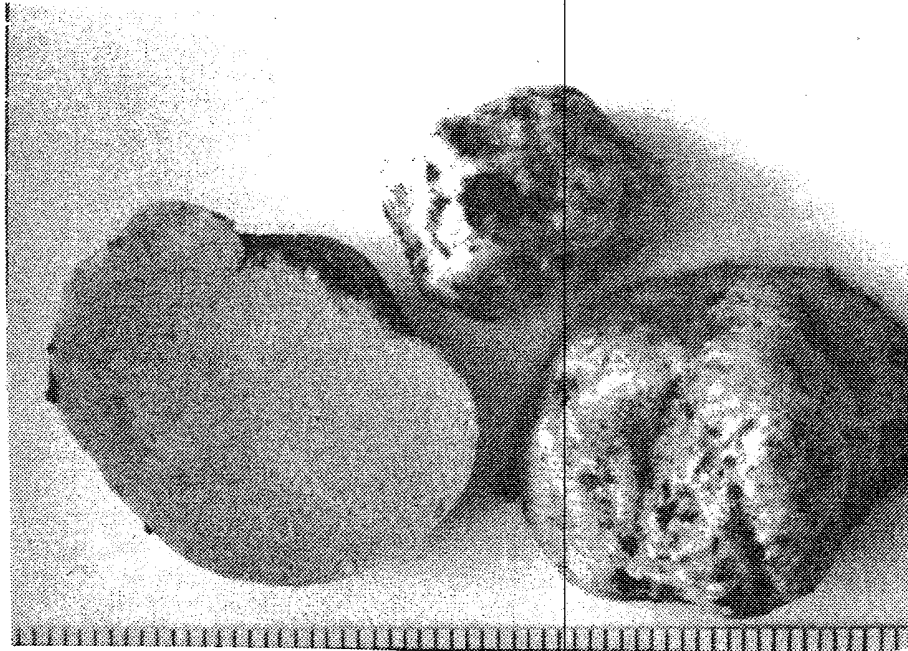


Photo by Dr. James Trappe  
From NATS Photo Packet

ORDER: Gasteromycetes

Martellia: in honor of the 19th century Italian collector, Martellia.

Gilkeyae: named for Dr. Helen Gilkey, noted botanist and curator of the OSU Herbarium for 33 years, 1918-1951.

DESCRIPTION:

by Dr. Steven Miller

BASIDIOCARPS: 1-3 cm. diameter, mostly globose to subglobose, occasionally lobed from fusion of one to several basidiocarps, often furrowed and depressed below; basal attachment usually present, stiff, easily broken or covered by soil so as to be inconspicuous.

PERIDIUM: surface moist, smooth above, minutely velutinous, nearly translucent fresh, often with glebal locules visible through out the peridium; light orange, brownish orange, reddish golden to brown, no bruising observed.

GLEBA: loculate, locules small in youth, up to 1-2 per mm in age, irregularly shaped, usually smaller toward the periphery; columella occasionally present, thin, non-branching, perhaps developed from fusion of one to several sporocarps; white young, light orange when older, often with patches of white in otherwise mature gleba, trama white or yellowish white even at maturity, spore deposits in chambers light orange.

ODOR: strong, aromatic to slightly rubbery(similar to the odor of Zelleraomyces gilkeyae).

TASTE: mild, starchy, mealy.

HABITAT: This fungus is found associated with older Douglas fir in the spring and fall. Another species, Martellia oregonensis, is also colored orange in the peridium and pale orange in the gleba, but it is found primarily in the spring and has a much more fruity odor.

**EDIBILITY:** Edible, very good. Is a good flavor enhancer in recipes used by NATS members.

GLOSSARY:

**Columella** - a sterile central axis, or column, within a mature fruiting body.

**Locule** - a cavity in or on which spores are produced.

**Velutinous** - thickly covered with delicate hairs; like velvet.

RECIPES

TRUFFLE-SALMON QUICHE

Norene Wedam

8 oz. cooked silver salmon, flaked  
2 C shredded mozzarella cheese  
1 tsp chopped green onion  
1 tblsp all purpose flour  
¼ tsp salt  
6 large Martellia truffles, grated  
pinch of nutmeg  
3 eggs  
1 C whole milk(scant)  
9" unbaked pastry shell, deep

Combine cheese, onion, flour and salt. Spread half of mixture on bottom of crust. Top with salmon. Spread remainder of cheese mixture on the salmon.

Put eggs, truffles, nutmeg and milk in blender on low speed, or mix well by hand. Pour this liquid mixture over ingredients in pastry shell.

Bake 15 minutes at 450 degrees. Reduce heat to 350 degrees and bake for 30 minutes or longer until well browned. Serves 6.

VEGETARIAN QUICHE

Pat and John Rawlinson

Pastry:

½ cup stone ground whole wheat flour  
½ cup unbleached white flour  
½ cup shortening  
¼ cup milk

Work the shortening into flour with a pastry blender. Slowly add milk. Dough will be sticky. Roll out on a

well floured cloth, turning once. Line a 9 inch pie plate with the pastry. Flute edge. Prick crust with fork. Bake at 400 degrees for 10 minutes.

Filling:

2 T butter  
1 medium onion, chopped  
1 C sliced mushrooms (any variety)  
8 oz. shredded cheddar cheese(2 cups)  
3 eggs  
½ C milk  
1 T parsley flakes  
¼ cup thinly sliced Martellia truffle

Heat butter in skillet. Saute onion and mushrooms until soft. Spoon into baked crust.

Sprinkle cheese over vegetables. Beat eggs in a small bowl until frothy. Stir in milk and pour over vegetables and cheese. Top with parsley.

Bake at 400 degrees for 15 minutes. Lower temperature to 350 degrees and continue to bake for 20 minutes.

Remove quiche and sprinkle with sliced truffles. Let stand for five minutes before cutting. Serves 6.

STIR FRIED VEGETABLES WITH TRUFFLES

From NATS recipes

Slice one cup each of two or three favorite vegetables. Stir fry in butter or oil.

Add one cup sliced Martellia truffle, stir lightly and serve.

TOSSED GREEN SALAD

Add sliced or chopped fresh Martellia truffles to any green salad combination. Taste to determine how many truffles you want to use.

Serve with oil and vinegar dressing.



1986 FINDS

5/11/86 Santa Cruz County, CA.  
 N 36 58'32" W 122 01'30" 500'

Endogone flammicorona Trappe & Gené.....David Arora  
 Genea intermedia Gilkey.....SAA  
 Geopora clausa(Tul. & Tul.)Burds.....SAA  
 \*\*Hysterangium sp. novum.....SAA  
 Octavianina rogersii Singer & Smith.....SAA  
 Radiigera fuscogleba Zeller.....SAA

11/04/86 Sherwood, Oregon  
 N 45 21'24" W 122 50'20" 205'

Endogone sp., immature.....Roger Knight  
 Rhizopogon colossus Smith(2 coll.).....SAA  
 Rhizopogon parksii Smith.....SAA

FEBRUARY 1987 FINDS

2/25/87 Sherwood, OR.  
 See above

Hymenogaster parksii Zeller & Dodge.....Roger Knight

MARCH 1987 FINDS

3/14/87 Near Beaver Creek, OR., Clackamas County  
 N 45 17'17" W 122 32'04" 600'

Rhizopogon villosulus Zeller(2 coll.).....Dan Wheeler  
 Tuber sp., immature.....SAA

3/18/87 Sherwood, OR.  
 See above

Rhizopogon vinicolor Smith.....Roger Knight

3/27/87 Six miles SE of Waldport, OR.  
 N 44 22'10" W 124 02'15" 400'

Hydnotrya variiformis Gilkey.....Leeds Bailey  
 Melanogaster sp., immature.....SAA

3/28/87 Holman Wayside Park, Polk County, OR.  
 N 44 56'00" W 123 06'07" 150'

Genea intermedia Gilkey.....Welles Bushnell  
 Hymenogaster sp.....SAA

3/29/87 Peterson's Butte, Linn County, OR.  
 N 44 30'45" W 122 58'30" 1050'

Tuber sp., immature.....Dan Wheeler

APRIL 1987 FINDS

4/01/87 Stebbins Creek, Skamania County, WA.  
 N 45 41'27" W 122 07'15" 900'

Rhizopogon vinicolor Smith.....Janet Lindgren

4/02/87	Near Buell, Polk County, OR. N 45 00'59" W 123 25'02"	1000'	
	Gautieria sp., immature.....		Welles Bushnell
	Hydnotrya sp., immature.....		SAA
	Hysterangium crassirhachis Zeller & Dodge(2 coll.)		SAA
	Hysterangium setchellii Fischer(2 coll.)		SAA
4/04/87	Hwy 55, 30 miles N of Boise, Idaho N 43 36'49" W 116 12'09"	3000'	
	Endogone lactiflua Bk. & Br.....		Henry Pavelek, Jr.
4/04/87	Peterson's Butte, Linn County, OR. N 44 30'45" W 122 58'30"	800-1000'	
	Barssia oregonensis Gilkey.....		Roger Knight(2) Alan Parks, Henry Pavelek
	Elaphomyces muricatus Fr.....		Roger Knight Dan Wheeler
	Endogone lactiflua Bk. & Br.....		Welles Bushnell Dan Wheeler
	Genabea cerebriformis(Harkn.)Trappe.....		Dan Wheeler
	Genea sp., parasitized.....		Dan Wheeler
	Geopora cooperi Harkn. f. cooperi.....		Janya Ross Frank Morris
	Glomus macrocarpum Tul. & Tul.....		Janya Ross
	Gymnomyces sp.....		Frank Morris
	Hymenogaster parksii Zeller & Dodge.....		Roger Knight
	Hymenogaster sp.....		Welles Bushnell(2) Vern Moore, Alan Parks, Henry Pavelek
	Radiigera sp., immature.....		Henry Pavelek
	Rhizopogon vinicolor Smith.....		Evedene Bennett Blanche Canaday, Frank Morris
	Tuber californicum Harkn.....		Frank Morris
	Tuber gibbosum Harkn.....		Henry Pavelek Pat Rawlinson
	Tuber sp., immature.....		Welles Bushnell Vernon Moore, Alan Parks(2 coll.), Henry Pavelek, Janya Ross, Dan Wheeler
4/04/87	Paul Bishop's Tree Farm, Beavercreek, OR. N 45 16'47" W 122 33'31"	530'	
	Barssia oregonensis Gilkey.....		Dan Wheeler
	Endogone lactiflua Bk. & Br.....		SAA
	Rhizopogon hawkeriae Smith.....		SAA
	Rhizopogon villescens Smith(3 coll.)		SAA
4/09/87	Bridge Creek Rd., near Silverton, OR. N 44 53'55" W 122 35'38"	1900'	
	Tuber sp., immature.....		Welles Bushnell
4/10/87	Buell, Polk County, OR. N 45 00'59" W 123 25'02"	1200'	
	Gautieria monticola Harkn.(2 coll.).....		Welles Bushnell
	Hymenogaster parksii Zeller & Dodge.....		SAA
	Hysterangium crassirhachis Zeller & Dodge.....		SAA
	Hysterangium setchellii Fischer.....		SAA
	Rhizopogon vinicolor Smith(3 coll.)		SAA

4/11/87 Champoeg State Park, Oregon  
TBA

Rhizopogon vinicolor Smith.....Roger Knight

4/11/87 Paul Bishop's Tree Farm, Beaver Creek, OR.  
N 45 16'47" W 122 33'31" 520'

Martellia gilkeyae(Zeller & Dodge)Sing. & Smith...Dan Wheeler  
Martellia sp., immature.....SAA  
\*\*Melanogaster natsii sp. novum.....SAA  
Rhizopogon vinicolor Smith.....SAA  
Tuber sp., immature(2 coll.).....SAA

4/12/87 Two miles S of Beaver Creek, Clackamas County, OR.  
N 45 17'17" W 122 32'04" 600'

Barssia oregonensis Gilkey.....Dan Wheeler  
Hymenogaster parksii Zeller & Dodge(2 coll.).....SAA  
Hysterangium crassirhachis Zeller & Dodge.....SAA  
Hysterangium sp., immature(2 coll.).....SAA  
Martellia gilkeyae(Zeller & Dodge)Sing. & Smith...SAA  
Rhizopogon hawkeriae Smith.....SAA  
Tuber californicum Harkn.....SAA

4/15/87 Twelve miles east of Estacada, OR.  
N 45 17'50" W 122 12'45" 1200'

Gautieria monticola Harkn.(2 coll.).....Welles Bushnell  
Hymenogaster sp.....SAA  
Hysterangium coriaceum Hesse.....SAA  
Rhizopogon vinicolor Smith(2 coll.).....SAA

4/19/87 Paul Bishop's Tree Farm, Beaver Creek, OR.  
See above

Endogone flammicorona Trappe & Gerd.....Dan Wheeler  
Endogone lactiflua Bk. & Br.....SAA  
Rhizopogon villescens Smith(7 coll.).....SAA  
Rhizopogon sp., immature.....SAA  
Scleroderma sp., immature(2 coll.).....SAA  
Tuber sp., immature.....SAA

4/19/87 Two miles S of Beaver Creek, Clackamas County, OR.  
See above

Barssia oregonensis Gilkey.....Dan Wheeler  
Endogone lactiflua Bk. & Br.....SAA  
Martellia sp., immature.....SAA  
Tuber sp., immature.....SAA

4/30/87 Rickreall Creek, Polk County, OR.  
N 44 55' 44' W 123 06'50" 400'

Genabea cerebriformis(Harkn.)Trappe.....Welles Bushnell  
Hysterangium coreaceum Hesse.....SAA  
Hysterangium setchellii Fischer.....SAA  
Rhizopogon vinicolor Smith(2 coll.).....SAA



MAY 1987 FINDS

5/02/87 Paul Bishop's Tree Farm, Beaver Creek, OR.  
 N 45 16'47" W 122 33'31" 520'

Barssia oregonensis Gilkey.....Dan Wheeler  
 Endogone lactiflua Bk. & Br.....SAA  
 Martellia sp., immature.....SAA  
 Tuber sphaerosporum Gilkey.....SAA

5/02/87 Camp Sherman, Jefferson County, OR.  
 N 44 27'38" W 121 38'24" 2500'

Geopora cooperi f. gilkeyae Burds.....Dan Wheeler  
 Rhizopogon vinicolor Smith.....Dan Wheeler

5/03/87 Camp Sherman-Metolius River area, Jefferson County, OR.  
 N 44 27'38" W 121 38'24" 2800'

Rhizopogon vinicolor Smith(5 coll.).....Pat Rawlinson

5/09/87 Two miles S of Beaver Creek, Clackamas County, OR.  
 N 45 17'17" W 122 32'04" 600'

Barssia oregonensis Gilkey.....Dan Wheeler  
 Endogone flammicorona Trappe & Gerd.....SAA  
 Hymenogaster parksii Zeller & Dodge(4 coll.).....SAA  
 Parasitized Martellia sp.(2 coll.).....SAA  
 Rhizopogon parksii Smith(2 coll.).....SAA  
 Tuber californicum Harkn.....SAA

5/10/87 Paul Bishop's Tree Farm, Beaver Creek, OR.  
 See above

Barssia oregonensis Gilkey.....Dan Wheeler  
 Endogone flammicorona Trappy & Gerd.....SAA  
 Geopora cooperi Harkn. f. cooperi.....SAA  
 Hydnotrya sp., immature.....SAA  
 Martellia subochracea Smith.....SAA  
 Martellia sp., immature.....SAA  
 Rhizopogon sp. (3 coll.).....SAA  
 Scleroderma sp., immature.....SAA  
 Tuber sp., immature(2 coll.).....SAA

COMMENTS FROM DR. TRAPPE

Tuber gibbosum Harkn., collected by Henry Pavelek and Pat Rawlinson, 4/04/87, is perhaps the first April find on record of this species.

Tuber californicum Harkn., collected by Dan Wheeler, 4/12/87, is an unusually large specimen.

THANK YOU to Keith Sherry, Frank and Lesley Morris, Dennis and Norene Wedam, John and Pat Rawlinson for working in the NATS booth at the Family Forestry Expo, held in Glide, OR., May 16-17, 1987.

NATS WELCOMES the following new members: Greg Ross, Granada Hills, CA.; Moshe Shifrine, Woodland, CA.; Henry Trione, Santa Rosa, CA.; Kenneth Keirstead, Bellvue, WA.; Dr. V. H. Vedda, Edison, NJ.; Helen P. Ward, Salem, OR.; Michael and Elizabeth Enright, Lebanon, OR.

CONTINENTAL AIRLINES In Flight Magazine recently ran an article titled "A Truffling We Will Go," by Ann Ruff. NATS was mentioned in the article, as were our recipes. We have had numerous requests for the recipes and information about our organization. The article is in the NATS library.

SOUTHERN IDAHO MYCOLOGICAL ASSOC.  
(SIMA) Spring Foray, June 19-21,  
1987, at the Donnelly, Idaho, Christ-  
ian Youth Camp, located on the west  
side of Cascade Lake.

Dr. Orson K. Miller, mycologist  
and reknown author of MUSHROOMS OF  
NORTH AMERICA and soon to be releas-  
ed HOW TO IDENTIFY THE PUFFBALLS  
AND THEIR RELATIVES, will be the  
visiting mycologist and lecturer.

Hope Miller, mycophagist, will  
present a program Friday evening  
on "Gourmet Recipes and Demos."

Registration begins at 3:30 PM  
on Friday, June 19, 1987. Fees are  
as follows:

SIMA & NAMA members,	\$5.00
Guests:	
Singles	\$10.00
Family	15.00
Mycophogy Only	3.00
Display Viewing & Saturday Program Only	3.00
Potluck, with food	Free
Potluck, without food	6.00
RV parking per night	4.00



The North American  
Truffling Society, Inc.  
P. O. Box 296  
Corvallis, OR. 97339

June Meeting - June 6, 1987

No Meeting for July/August

Dorm lodging with your own  
sleeping bag, per night \$3.50

Friday

3:30 Registration Begins  
Sign up for Field Trips  
7:00 Mushroom Cookery Demo  
8:30 Mushroom Identification

Saturday

7:00-8:30 Breakfast served  
9:00-3:00 Mushroom Field Trips  
3:30-5:30 Mushroom Identification  
followed by display  
6:00 Potluck  
7:15 Program-Dr. Orson Miller

Sunday

7:00-8:30 Breakfast served  
9:00 Short foray  
10:30 Display dismantled  
12:00 Departure time

Advance registration is not neces-  
sary. NATS members are invited and  
encouraged to attend this foray.

For further information, contact  
Robert Forney, Chairman:

Nampa: 466-4239

Boise: 345-2515

NON PROFIT ORG.  
U. S. POSTAGE  
PAID  
CORVALLIS, OR.  
PERMIT NO. 104

NATS Library  
38644 Green Drive  
Lebanon,  
OR. 97355