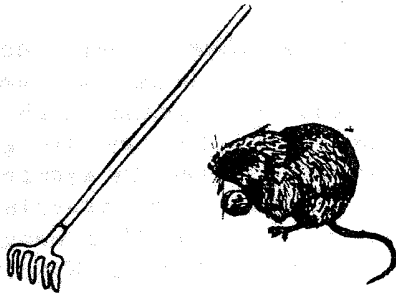


NORTH AMERICAN TRUFFLING SOCIETY  
LIBRARY 88-68



NATS CURRENT NEWS

Monthly publication for  
THE NORTH AMERICAN TRUFFLING SOCIETY, INC.  
P. O. Box 296  
Corvallis, OR. 97339

June-July 1988

Editor: Pat Rawlinson

Vol. 6 No. 6

President: Dr. Steven Miller, PO Box 3004-203, Corvallis, OR 97339; 757-4408.  
Vice President: Thom O'Dell, FSL, 3200 SW Jefferson Way, Corvallis, OR 97331; 757-4379.  
Secretary: Betty Smith, 2968 NW 13th Place, Corvallis, OR 97330; 753-2031.  
Treasurer: Welles Bushnell, 646 45th Place NE, Salem, OR 97301; 585-4215.  
Immediate Past President: Frank Morris, 2915 NW Garfield, Corvallis, OR 97330; 754-9362.  
Board Member-at-Large: Frank Evans, 808 NW Merrie Drive, Corvallis, OR 97330; 752-5480.  
Membership: Vern-Verba Moore, 31831 Berlin Rd., Lebanon, OR 97355; 451-4252.  
Trufflemaster: Steve Morgan, 35550 Kirk Ave, Brownsville, OR 97327; 466-5206.  
Librarian: John Rawlinson, 34197 NE Colorado Lk Dr, Corvallis, OR 97333; 752-2243.  
President, Portland Chapter: Dan Wheeler, 7714 SE Stephens, Portland, OR 97215; 774-0223.  
Newsletter Ed: Pat Rawlinson, 34197 NE Colorado Lk Dr, Corvallis, OR 97333; 752-2243.

FORAY, June 4, 1988, to Eddyville, OR. Meet at Benton Center, 630 NW 7th, Corvallis, OR. at 9:00 A. M.

We will meet at 10:00 A. M. at Little Elk Store, 30 miles west of Corvallis on Hwy 20, just past milepost 26.

For those coming from the coast, Little Elk Store is about two and one half miles east of Eddyville, just before milepost 26.

Dress for the weather and bring a lunch. For more information, call Steve Morgan, Brownsville 466-5206.

FORAY, July 9, 1988, to Iron Mountain in the Western Cascades. Meet at one of the following times:

8:00 A. M. at Benton Center, 636 NW 7th, Corvallis, OR.

8:30 A. M. at VIPS, I-5 and Hwy 34 interchange.

10:00 A. M. at the parking lot on Civil Road.

Dress for the weather and bring a lunch. July is the peak time for wildflowers on Iron Mountain, so tuck in your wildflower identification book.

To reach Iron Mountain, take Hwy 20, the South Santiam Hwy, through

Lebanon and Sweet Home, to mile post 62 which is 36 miles from Sweet Home. Just after milepost 62, turn left onto CIVIL ROAD, road #2000-035. At the junction of road #2000-035 and 2000-038, take road 2000-038 and continue to the end of the road and the parking lot.

For further information, contact Steve Morgan, Brownsville 466-5206.

Steve Morgan  
Trufflemaster

MEETING, June 6, 1988, 7:30 P. M., Large Conference Room, Forest Sciences Lab, 3200 Jefferson Way, Corvallis, OR.

Mike Amaranthus will speak on "The Living Soil." Mike is completing his doctorate work at Oregon State University. He recently had an article in "MUSHROOM, the Journal," which was reprinted in the April 1988 NATS CURRENT NEWS.

For further information, contact Thom O'Dell, 757-4379.

Thom O'Dell  
Program Chairman

## PORTLAND CHAPTER OF NATS

Foray, June 11, 1988, to View, WA., near Cougar, WA. Meet at 10:00 A. M. at Albertson's parking lot, S. E. 82nd and Division, Portland, OR. We will car pool.

Dress for the weather and bring a lunch. This area is in the rain forest and promises to be good truffling!

Foray, July 9, 1988, to Paul Bishop's Tree Farm, Beavercreek, OR. Meet at 10:00 A. M. at Albertson's parking lot, S. E. 82nd and Division, or at 10:30 A. M. at Paul Bishop's.

To reach Bishop's Tree Farm, travel south on Hwy 213. About 4-5 miles south of Oregon City, go past Leland Road Junction for 1/4-1/2 mile. You will see two stacks of white tires on the left, on either side of the driveway. Turn left and go down the driveway to the house.

Meeting information may be obtained by contacting President Dan Wheeler, 774-0223.

Dan Wheeler  
President, Portland NATS

## PRESIDENT'S COMMENTS

Many good times, companionship and wonderful gourmet meals have made the past few years enjoyable almost beyond belief. It has been delightful to get to know the people in NATS and all the truffles that the Pacific Northwest has to offer.

I regret to say that I will be moving to Wyoming this summer and will not be as closely associated with NATS as I have been (except on occasion). All is not sadness however, as Wyoming is my home state and is largely unexplored for both truffles and epigeous fungi. I will be assuming a research position at the University of Wyoming in Laramie, and will concentrate on the below ground dynamics of roots, mycorrhizae and fungi in lodgepole pine after disturbance. I was also granted money to study the hypogeous fungi of Grand Teton National Park (it's a rough life, but somebody's got to do it!).

I won't say goodbye, but only so long for awhile to those who have made my short stay in Oregon such a pleasure. I am going to try to get a mycological society started in Wyoming, with a strong emphasis on truffles. With time I hope to pull together enough excitement and interest for a Wyoming NATS chapter. Keep up the good work, and remember to cover your divots!

Steve Miller  
NATS President

NATS GOOD WISHES go with you, Steve, and with Jenny. You have unselfishly shared your friendship, enthusiasm, energy and a vast knowledge of fungi with us. We won't forget your leadership as NATS President, or your ever present smile!

Steve has promised to continue with the "Truffle of the Month" descriptions for the newsletter. The University of Wyoming is on the semester system, so the long breaks between semesters will provide the time for return trips to Oregon and a few forays with NATS.

Wyoming's gain is our loss. We will miss you, Steve!!!!

## FAREWELL POTLUCK FOR THE MILLERS

NATS will host a potluck dinner for Steve and Jenny Miller, June 4, 1988, 6:00 P. M., at the Rawlinson's, 34197 NE Colorado Lake Drive, Corvallis, OR. Please bring a hot dish or salad. Dessert, coffee, tea will be provided. Table service will also be provided.

Colorado Lake Drive is 3 miles east of Corvallis off Hwy 34. Number 34197 is on the right, one half mile from Hwy 34. Look for the balloons on the tree next to the driveway.

Call 752-2243 for information.

## PLEASE NOTE

NATS forays are held on the first Saturday of every month, except for July and September, when they are the second Saturday (because of the July 4th and Labor Day holidays).

Meetings are always on the first Monday following the foray. There are no meetings in July and August. Mark your calendars now!

TRUFFLE OF THE MONTH  
Gautieria monticola Harkn.

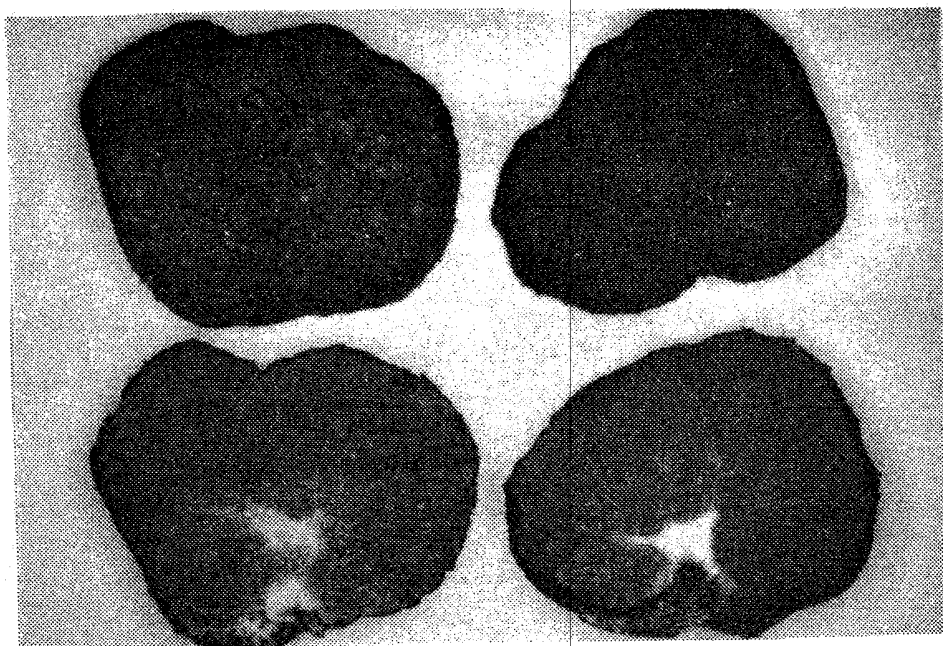


Photo by Dr. James M. Trappe

ORDER: Basidiomycetes

DESCRIPTION

By Dr. Steven Miller

**ETYMOLOGY:** So named because of its preference for mountainous regions.

**BASIDIOCARPS:** 1.0-5.5(10) cm in diameter, subglobose, turbinate or deeply lobed, with stout rhizomorphic attachment protruding from the base or in depression below.

**PERIDIUM:** Surface dry, rivulose from abundant appressed rhizomorphs oriented vertically around sporocarp, felted between lobes, occasionally with glebal chambers exposed near the base; white or pale brown at first, then yellowish brown to brown, usually lighter between lobes; in cross section 0.5-1.5 mm thick, pale brown to brown.

**GLEBA:** Loculate, locules small, labyrinthiform, 1-2 per mm, irregular in orientation, firm when young, in age tough, cartilagenous; columella well developed, dendritic, with few or many branches, arising from a stout sterile base, texture of gristle; orange yellow to reddish brown, columella pallid white to pale yellowish brown.

**ODOR:** Not noticeable to very strongly of road tar.

**TASTE:** Mild, fungal.

**EDIBILITY:** Edible. No recipes developed at this time.

Solitary to gregarious, hypogeous to sebepigeous, associated with a variety of western conifers, including true firs, pines, and western hemlock. Spring, summer or fall at various elevations from the Rocky Mountains westward.

The odor of this fungus is desirable to some, but I find it overpowering. However, I have collected this fungus fresh in the spring and it had no odor at all.

Spores 10-14(-15) x 6-9  $\mu$ m



FEBRUARY 1988 FINDS

2/14/88 Two miles south of Beaver Creek, Clackamas County, Oregon  
Hymenogaster parksii Zeller and Dodge(2 coll.).....Dan Wheeler  
Rhizopogon parksii Smith.....SAA

MARCH 1988 FINDS

3/11/88 Seven miles south of Bandon, OR. near Laurel Lake, Coos County, OR.  
Rhizopogon occidentalis Zeller & Dodge.....Maury Haseltine  
Tuberculate mycorrhizae of Douglas-fir.....James Haseltine  
3/15/88 Grande Ronde, OR.  
Hymenogaster parksii Zeller & Dodge.....Welles Bushnell

APRIL 1988 FINDS

4/09/88 Peterson's Butte, Linn County, OR.  
Hymenogaster parksii Zeller & Dodge.....Dan Wheeler  
Hymenogaster sp.....SAA  
Rhizopogon vinicolor Smith.....SAA  
Tuber rufum var. nitidum(Vitt.)Fischer, immature.....SAA  
Tuber sp., immature.....SAA

MEET YOUR OFFICERS

Verba Moore, wife of Vern Moore and co-membership chairperson, attended Conners State Agricultural College in Warner, Oklahoma. She has cooked at several hospitals and schools, and for a construction crew in Alaska. Her hobbies are Vern, grandchildren, playing pinochle, and mushrooming--especially hunting for boletes!

Vern Moore attended school in Coos Bay, Lebanon, and Linn-Benton Community College. He served in the military police during the Korean campaign. Vern enjoys fishing, mushrooming, pinochle, Verba's companionship, and of course, the grandchildren!

Membership work is very enjoyable for both Vern and Verba, primarily because of the contact with many people of varied occupations and interests, from all over the world.

NATS WELCOMES the following new members: from CA., Michael L. Kennedy, Stockton; Donald Lauritson, Salinas; Douglas Jornlin, Eureka. Patti and Steve Janego, Corvallis, OR.; Annette Reed, Courtenay, B. C., Canada.

\*\*\*\*\*

SMC'S RESEARCH GRANTS

Reprinted from "The Fungus-Amungus," newsletter of the Spokane Mushroom Club, Inc., May-June-July 1988.

Our Mushroom Club last year supported three research projects being carried on at Oregon State University by doctoral students. Two of these grants were given to Thom O'Dell to pursue the on-going collection of alpine fungi in the Cascades and also to help support Thom's thesis research on the effect of mycorrhizal fungi on rooting of chestnut cuttings. Dr. Trappe, his major advisor, sums up in an excellent way Thom's progress in both of these projects:

"Spokane Mushroom Club funds permitted Thom to collect far more fungi over more alpine areas than would have otherwise been possible. Alpine fungi are tricky to find, because they don't express the same seasonality as do fungi at lower elevations. About 200 collections were obtained. Perhaps the most novel was Gastroboletus turbinatus, rare in Washington and unknown so far from timberline zones. Rhizopogon subsalmoneus was another exciting find: it occurred in association with krummholz whitebark pine well above timberline in the Chelan mountains. The other

project, effect of mycorrhizal fungi on rooting of chestnut cuttings, is taking longer than anticipated but is nonetheless progressing nicely.

Thom is doing splendidly in his classes as well as in his research. He will be a fine addition to the roster of professional botanists when he graduates. Recently he was elected vice president of the North American Truffling Society."

THOM O'DELL will assume the duties of president of NATS when Steve Miller moves on to the University of Wyoming. We are all looking forward to working with Thom.

#### NOTE ON TRUFFLES

Reprinted from "The Mycelium," newsletter for the Toronto Mycological Society, Jan-Feb-Mar 1988.

In Europe the truffle season will soon begin. In France pigs are still used to hunt truffles, but in Italy pigs have been replaced by dogs. Generally a dog trained on white truffles is unlikely to find a black truffle. The reason for this lies in the different composition of the odor. The main compounds of the smell produced differ only by the presence of one more atom of sulphur. Many other hypogeous fungi produce the same compound as the black truffle so a dog trained to hunt black truffles can find them. Some genera (ex. Elaphomyces) do not produce this sulphur compound and their presence cannot be detected by dogs, although other animals such as squirrels and boars dig and feed on them.

#### PIZZA RUSTICA

Recipe by Norene Wedam

Crust: 1T Baker's yeast in 2/3 cup warm water. Proof 15 minutes.

2 cups unbleached white flour, or half whole grain flour.

1 t salt(optional)

1 T oil

Knead and raise, as if for bread dough. Roll crust out and lay in greased 10"x 15" or other large pan. Prick with fork and bake 5 minutes at 450 degrees.

Sauce: Combine 1 egg  
1 pint sour cream  
Parsley, pepper, salt  
sugar to taste. Very  
important to adjust  
seasonings.

Pour over crust and continue baking until set and browned. Remove from oven. May top with any combination of crumbled bacon, minced onion, shredded ham, grated truffle.

THE MAY 7, 1988 foray to the Metolius area was a huge success! Everyone found morels, with the younger, first time mushroomers being the most successful. The foray was followed by a potluck dinner at the campsite of Frank Evans. Chef Evans cooked up his famous "Morels and Chicken in Cream Sauce," served over pasta. All the chefs did an admirable job and the food disappeared with much enjoyment and enthusiasm.

It was nice to have Shirley Freeman, from Gold Beach, OR., join us. Also Nancy McDonald and son, Arlo, and Steve Morgan's family and friends.



... A TRUFFLING WE WILL GO!!

"Mycofile," May 1988

Vancouver, B. C. Mycological Society

NATS PHOTO PACKS

35 color photographs of commonly found hypogeous fungi. Excellent field guide.

\$15.00 ppd

NATS SLIDE PACK

35 slides of hypogeous fungi, plus five slides pertaining to hypogeous fungi.

#30.00 ppd

THE COOKBOOK OF NORTH AMERICAN TRUFFLES

This unique book is the first cookbook of North American truffles. All recipes are favorites of NATS members. Edited by Frank and Karan Evans.

\$7.00 a copy

\$1.00 postage per book

To order any of the above, mail to:

NATS  
P. O. Box 296  
Corvallis, OR. 97339

NATS SLIDE SHOW

Complete with script, the slide show may be checked out by NATS members or mycological societies who wish to present a program on NATS and truffles. Borrower is asked to pay postage both ways. Write to: NATS, PO Box 296, Corvallis, OR. 97339.

JUNE-JULY CALENDAR

June 4, 1988 - Foray to Eddyville, OR. Meet at Benton Center, 9:00 A.M.

June 4, 1988 - Farewell Potluck Dinner for Steve and Jenny Miller, 6:00 PM, 34197 NE Colorado Lake Drive, Corvallis, OR.

June 6, 1988 - Meeting, Forest Sciences Lab, 7:30 PM. Mike Amaranthus, speaker.

July 9, 1988 - Foray to Iron Mountain, Hwy 20. Meet at Benton Center, 8:00 A. M., or at Iron Mountain, 10:00 A.M.

NO MEETINGS IN JULY AND AUGUST



The North American  
Truffling Society, Inc.  
P. O. Box 296  
Corvallis, OR. 97339

NON PROFIT ORG  
U. S. POSTAGE  
PAID  
CORVALLIS, OR.  
PERMIT NO. 104

NATS Library  
34197 NE Colorado Lk Dr  
Corvallis,  
OR. 97333